




HOW TO SETUP PRINTER USING IP ADDRESS


Step 1:

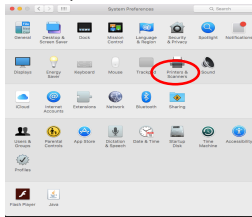
1. Select “Launch Pad” from the Dock 
2. Select “Self Service” 
3. Then, click “Install” option for Kyocera Drivers. 
4. Close “Self Service”.

Step 2:

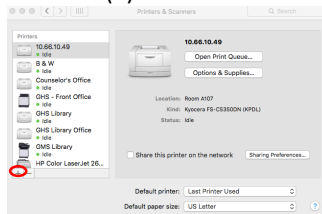
1. Find IP Address located on front of printer.



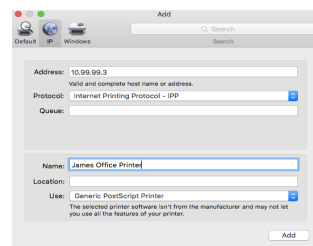
2. Open “System Preference” from the Dock. 
3. Select, Printers & Scanners.



4. Click the (+) button located at the bottom left-hand corner to add printer.



5. Select the “IP” tab.
6. Type your IP address from printer. Ex. 10.xx.xx.x
7. For Protocol, select “Internet Printing Protocol –IPP”
8. In the “Name” textbox, type the desired, ex. James Office.
9. In the “Use” textbox, select “Generic PostScript Printer.”



10. Click “Add”.
11. Select any options available if desired.
12. Click “OK”
13. Setup is complete.